

ELEVATION

2000 D/PANEL

15 x 115 CTRS

137.5

137.5

1800 HIGH

1675 D/RAILS

125

A

A

220x110x20mm THK BASEPLATE  
FIXED TO CONCRETE ON GROUT  
BED USING RESIN ANCHORS.

BASEPLATE WELDED  
TO POST WITH 3NO  
8mm FILLET WELDS  
AND 1NO BUTT WELD.

HILTI HAS ER M16 STST  
ANCHOR ROD C/W RE 500  
RESIN.

PANEL FABRICATED USING  
5mm FILLET WELDS UNLESS  
STATED OTHERWISE.

GRADE 4.6 M10 HEXAGON  
HEAD FIXING BOLTS.

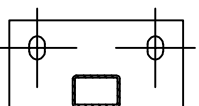
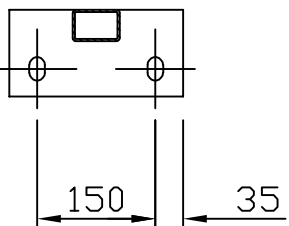
60x40x4mm RHS FRAME.

Ø25mm ROUND BAR INFILLS.

FIXING DETAIL

420

SECTION A-A



30N/mm<sup>2</sup> CONCRETE.

